

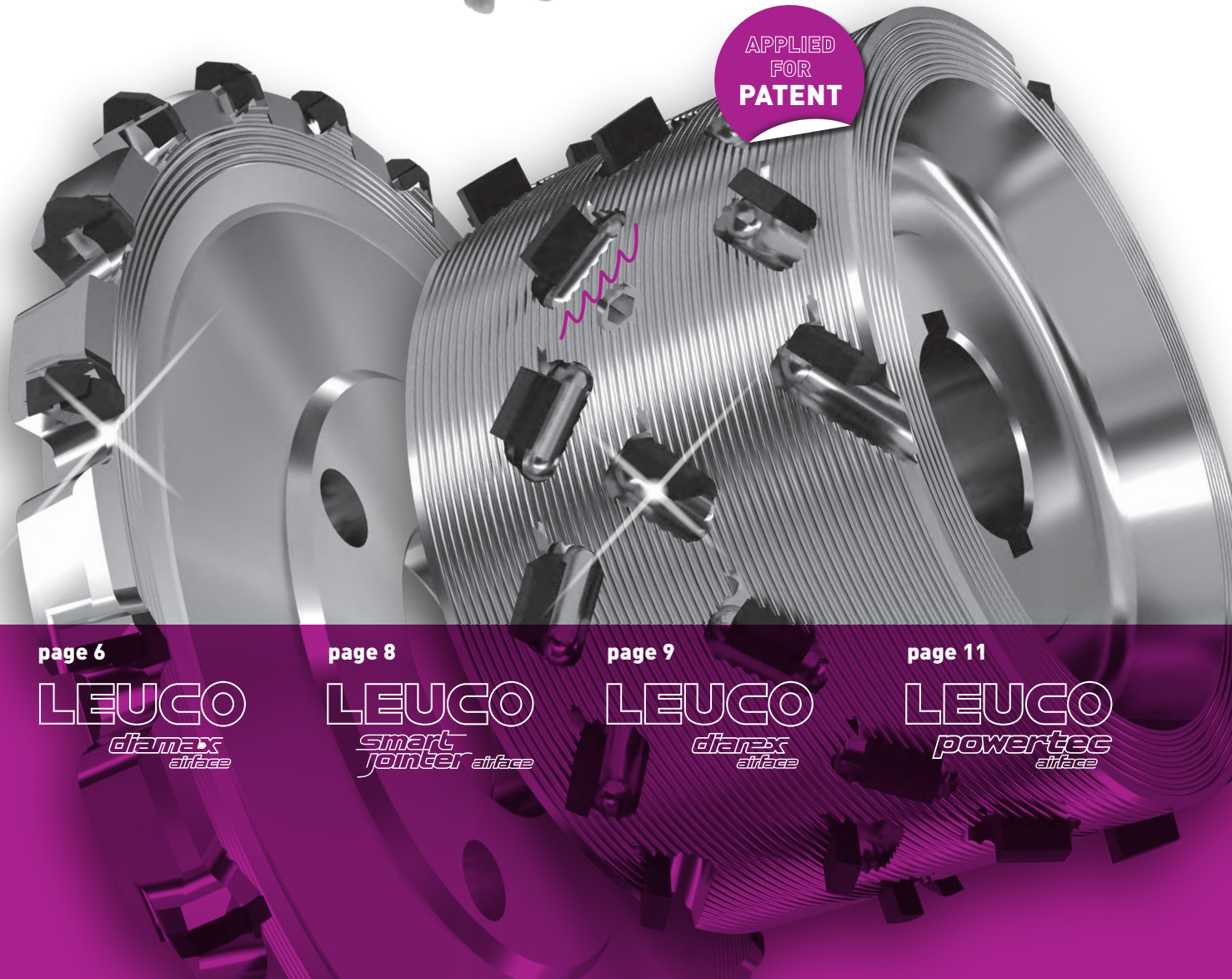


LEUCO

airFace PROGRAM JOINTING CUTTERS HOGGERS

CAPACITY AND
NOISE-OPTIMIZED

APPLIED
FOR
PATENT



page 6

LEUCO
diamax
airface

page 8

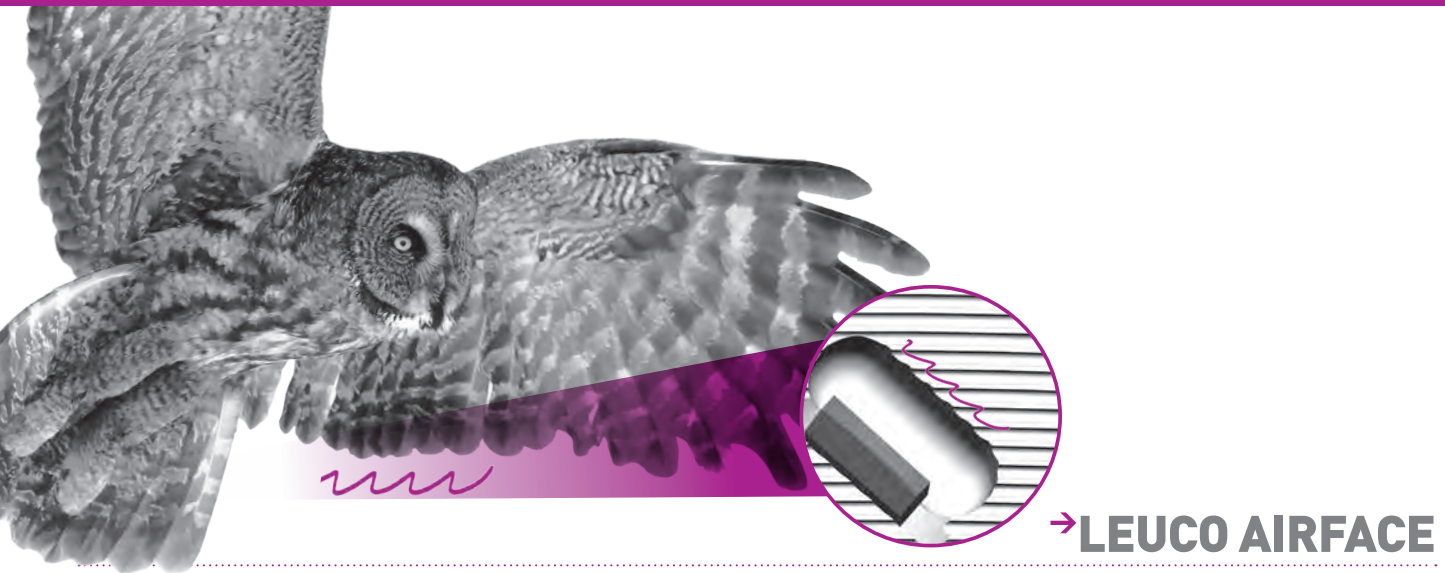
LEUCO
smart
jointer airface

page 9

LEUCO
diamax
airface

page 11

LEUCO
powertec
airface



The owl

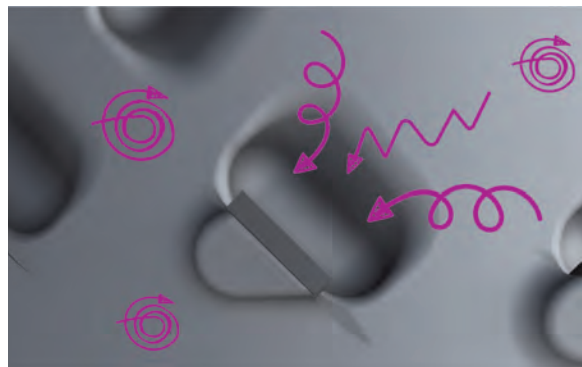
Their sophisticated feather structures allow them to fly almost noiselessly so that they do not startle their prey. Most of the noise is generated by turbulences at the rear edge of the wing. The „owl wing“ concept smoothes the air flow by means of the serrated edge and scatters noise, which allows nearly noiseless flight characteristics without having a negative effect on the aerodynamics.

Nature as a model for the tool development

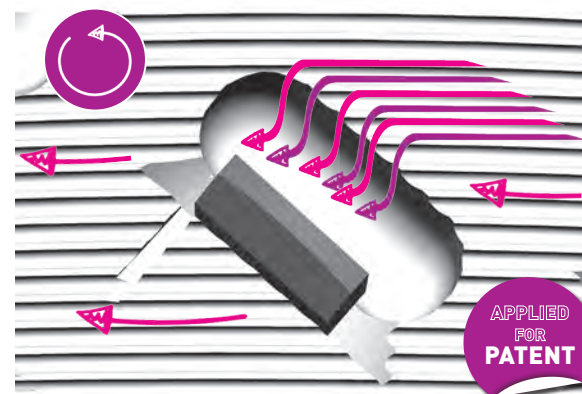
LEUCO has used this concept of learning from nature to make sizing tools even more aerodynamic and to achieve further effects in noise reduction! With the slogan „always one wing beat ahead“ and thanks to the completely new design approach, the tools will be designed for the first time without studs behind the edge and with a special surface! This kind of design has never been used in the field of woodworking and therefore represents a milestone in the jointing cutter evolution.

The owl wing is the role model for the new „LEUCO airFace design“

LEUCO has recognized the advantages of the owl wing structure and implemented this concept in the design of the new generation of jointing cutters and hogsers. The aim was to systematically guide the air flow around the diamond-tipped DP cutting edges and to reduce turbulences. The so-called „LEUCO airFace“ surface over the entire body of the jointing cutters and LEUCO PowerTec hogsers is the result of intense research and development work by experienced engineers. The principal effect of the gullet with the „owl wing edge“ is to canalize the air at this point. A patent is pending for the airFace principle.



Previously: Air turbulences at the cutting edge generated noise that negatively impacted the working environment around the machine.

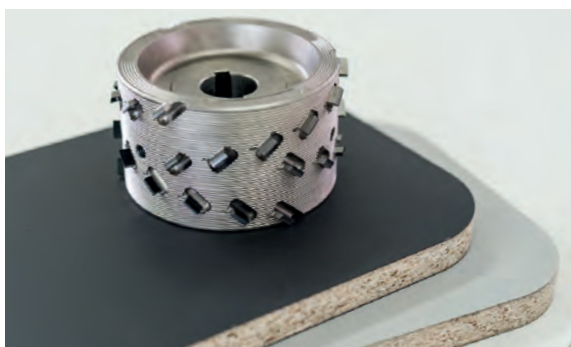


NEW: A closer look at the new surface structure of the body reveals a gullet with an „owl-wing edge“ of irregular shape, channeling the air at this point and thus reducing noise emission.

→ AIRFACE JOINTING CUTTERS AT A GLANCE

→ SNAPSHOT

airFace is	▶▶	... an innovative patent-pending surface of the tool body. The principle is based on an innovative development approach from nature's example and contributes audibly to noise reduction during the jointing process.
LEUCO SmartJointer, LEUCO DIAMAX and LEUCO DIAREX	▶▶	... are the proven diamond-tipped jointing cutters whose tool bodies are from now on equipped by default with the innovative airFace surface. Only LEUCO offers such a surface.
The highly appreciated jointing cutters	▶▶	... are still equipped with the well-known resharpening areas: LEUCO DIAMAX airFace = 1.5 mm and LEUCO DIAREX airFace = 3.0 mm.
The technical surface has been consistently implemented	▶▶	... therefore the studs behind the edge are no longer required. A stable tungsten carbide supporting plate provides the required stability. The air flow can be channeled more optimally.
The aerodynamic optimization	▶▶	... is the common thread running through the process up to the concentricity tolerance. Until now the balancing process has been realized with the help of balancing bores in the body. In the future, LEUCO will manufacture the body with defined threads for balancing screws to avoid the negative influence of balancing bores on the body surface.
The noise reduction can be heard and measured	▶▶	... and, when idling, a reduction by 1 dB for DIAMAX airFace and LEUCO SmartJointer airFace can be reached- compared to the already silent predecessor version. For LEUCO DIAREX airFace, a reduction of 2 dB can be reached when idling. These cutters are the quietest jointing cutters with steel body on the market.



As a particular advantage, the LEUCO DIAREX is equipped from now on with a higher shear angle and is therefore excellently suited for machining novel materials such as anti-fingerprint panels, for example.

→ **THE CURRENT PROGRAM WITH THE CURRENT DIMENSIONS AND INFORMATION ON THE WAREHOUSE AVAILABILITY CAN BE FOUND IN THE LEUCO ONLINE CATALOG**



→ LEUCO SMARTJOINTER IN AIRFACE DESIGN

Smart: stainless segments, re-usable body

The segments have a stainless steel body and are thus fully protected against oxidation. The objective is to use the aluminum body as often as possible. As most machine operators know, cutting edges along with the chip gullets are the areas of a cutter head that are most susceptible to wear. During a segment change on the SmartJointer airFace, the chip gullets are replaced at the same time. This prevents wear of the aluminum body and enables long-term multiple use.

SmartJointer – allowing customers to be independent

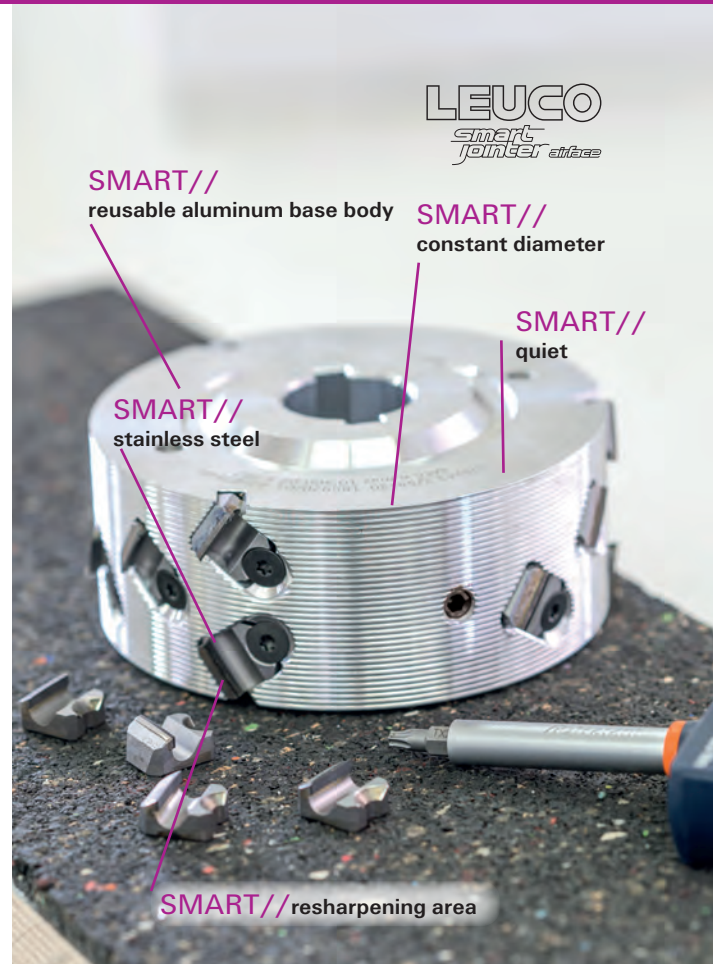
The new airFace version is ideally suited for customers who attach importance to a low noise level and/or who want to be independent of sharpening stations. Provided with a set of suitable replacement segments, they will be able to re-equip their tools at any time. Any items needed for replacing parts, such as DP replacement segments, torque wrenches and screws, are available from LEUCO. It is important to replace only complete sets of segments in order to avoid differences in cutting edge protrusion.

Diameter consistency saves time

Consistent tool diameters provide a clear advantage when inserting knives in mint condition. This avoids time-consuming adjustment procedures on the aggregate and allows users to promptly resume production! It is still also possible to have the SmartJointer airFace resharpened in the conventional way at the LEUCO ServiceCenter. For such cases, the tool is provided with a resharpening area of 1.5 mm, allowing several resharpening processes on the jointing head. This method is particularly suitable for industrially oriented companies, considering that no extra effort is required for segment replacement and that regular replacement cycles are scheduled anyway for production lines.

The entire previous SmartJointer product line has now been converted to the airFace version.

Please contact us for help in selecting the tool dimensions best suited for your machine and in making your production "smarter" with the new SmartJointer airFace.



DID YOU KNOW – machine manufacturer Homag delivers all its standard edge banding machines equipped with the LEUCO SmartJointer airFace as a standard component.

SMART//handling

The segments can be replaced by the customers themselves with only few accessories:

Video tutorial on YouTube
Just scan the QR code:

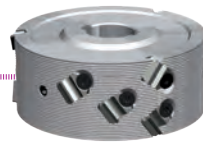


TIP:

It is possible to replace tooth rows already worn from cutting the top layer with rows from the core layer. Depending on the jointing quality requirements, this method can be useful to prolong the edge life.

→ AIRFACE JOINTING CUTTER PROGRAM

LEUCO SIZING TO SUIT ANY REQUIREMENT



DIAMAX
airFace

SmartJointer
airFace

DIAREX
airFace

Tool body features	Steel	Aluminum	Steel
Available diameters in mm	60-150	70-125	70-150
Shear angle	35°	35°	48°
Flow optimization/ airFace	+++	+++	+++
Number of teeth	2-4	2-3	2-4
Resharpener area	1,5 mm	1,5 mm	3 mm
Running meter performance/ edge life	++	++	+++
Cutting quality top layer	++	++	+++
Cutting quality middle layer	++	++	+++
Suitable for zero joint processing	++	++	+++
Segment replacement (only for cutterhead with segments)		possible at the customer's facilities	

Cumulative grade

„The solid, quiet, high-perfor-
mance cutter“

„The stylish, quiet,
lightweight cutter“
(do-it-yourself)

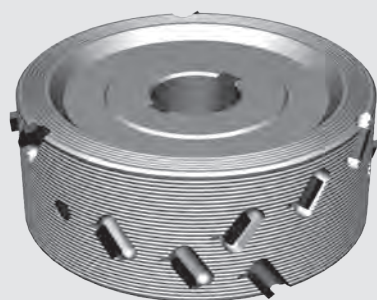
„The versatile,
quiet, high-quality super-
long-lasting cutter“

Legend ++ good +++ very good

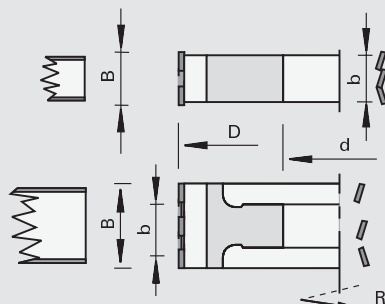
222220

DIAMAX airFace jointing cutter DP

Product



Drawing

LEUCO
DIAMAX
airFace

Polycrystalline diamond [DP]

MEC

Machine / application

| Through-feed machines
 | Edge banding machines
 | for very quiet and chip-free jointing of solid wood and wood-based panels with and without coating, focusing particularly on the reduction of noise

Design

| steel body with airFace surface
 | integrated balance screws
 | reinforced DP cutting edges
 | reduced gullet volume
 | shear angle 35°
 | Resharpener area 1.5 mm

Advantages

| compared to the LowNoise version, additional noise reduction by -1 dB(A) through airFace design and reduced gullet volume
 | good durability and high cutting quality thanks to large shear angle
 | machining of 8-mm panels is possible without adjustment

Notes

| sense of rotation according to DIN-EN 50144

Ø D	B	b	Ø d	Z	DKN	nmax			Ident-No. [L]	Ident-No. [R]
60	64,5	62	25	2+2	8x3,3	31000	Felder/Format 4	asymmetrical	186382	186381
70	43,2	61	30	2+2	8x3,3	24000	EBM, Hebrock	asymmetrical	186380 s	186379 s
70	50,3	31	30	2+2	8x3,3	24000	HOLZ-HER 1801 (alt)	asymmetrical	186390 s	186389 s
80	36	53	30	3+3	8x3,3	23300	Biesse Akron 400	quasisymmetrical	186364 s	186364 s
80	64	53	30	3+3	8x3,3	23300	Biesse Akron 400	symmetrical	186365	186365
80	43,2	53	30	3+3	8x3,3	23300	Biesse Akron 400	symmetrical	186366	186366
80	64,5	62	25	2+2	8x3,3	23300	Felder/Format 4	asymmetrical	186384 s	186383 s
85	43,2	50	30	3+3	8x3,3	22000	Ott	asymmetrical	186408	186409
85	64,5	44	30	3+3	8x3,3	22000	Ott	asymmetrical	186410 s	186411 s
100	64	75	30	3+3	8x3,3	19000	Biesse Akron 600/800	symmetrical	186367 s	186367 s
100	43,2	75	30	3+3	8x3,3	19000	Biesse Akron 600/800	symmetrical	186368 s	186368 s
100	64,5	40,6	30	3+3	8x3,3	19000	Brandt	asymmetrical	186371	186372
100	43,2	40,6	30	3+3	8x3,3	19000	Brandt	asymmetrical	186373	186374
100	43,2	42	25	2+2	8x3,3	19000	Brandt Ambition 1110 F (KDF 110), 1120 FC (KDF 120 C)	asymmetrical	186376 s	186375 s
100	43,2	61	30	2+2	8x3,3	19000	EBM / Hebrock	asymmetrical	186378	186377
100	43,2	25	30	2+2	8x3,3	19000	HOLZ-HER bis 2008, SCM-Stefani	asymmetrical	186385	186386
100	64,5	60,6	30	3+3	8x3,3	19000	SCM-Stefani	asymmetrical	186412	186413
100	43,2	45	30	3+3	8x3,3	19000	SCM-Stefani	asymmetrical	186414	186415
100	64,5	25	30	2+2	8x3,3	19000	HOLZ-HER bis 2008, SCM-Stefani, EBM	asymmetrical	186387	186388
125	64,5	54	30	3+3	8x3,3	15000	Homag	asymmetrical	186391 s	186392 s
125	43,2	54	30	3+3	8x3,3	15000	Homag	asymmetrical	186395	186396
125	43,2	40	30	3+3	8x3,3	15000	Homag	symmetrical	186399	186399
125	64	40	30	3+3	8x3,3	15000	Homag	symmetrical	186400	186400
125	29	34	30	3+3	8x3,3	15000	Homag	symmetrical	186401	186401
125	36	40	30	3+3	8x3,3	15000	Homag	symmetrical	186402	186402
125	64,5	72	30	3+3	8x3,3	15000	IMA 08.378	asymmetrical	186393 s	186394 s
125	43,2	72	30	3+3	8x3,3	15000	Homag	asymmetrical	186397	186398
125	43,2	57	30	3+3	8x3,3	15000	IMA 08.379	asymmetrical	186404 s	186405 s
125	64,5	57	30	3+3	8x3,3	15000	IMA 08.379	asymmetrical	186406 s	186407 s
150	43,2	40	30	4+4	8x3,3	12000	Homag	symmetrical	186403	186403
[mm]	[mm]	[mm]	[mm]		[mm]	[min-1]				

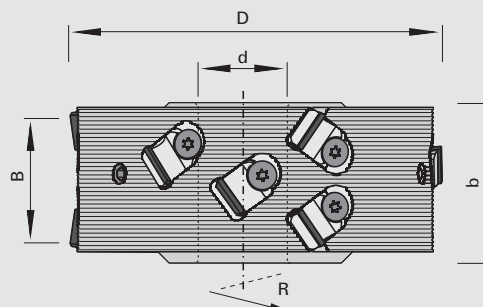
220220

DIAMAX SmartJointer airFace jointing cutterheads DP

Product



Drawing


LEUCO
smart jointer airFace

Polycrystalline diamond [DP]

MEC

Machine / application

Edge banding machines
for jump-milling units for very quiet jointing of solid wood and wood-based panels with and without coating, focusing particularly on the reduction of unbalance and noise

Design

aluminum body with airFace surface
with exchangeable stainless steel DP cutting edges
DP cutting edges with integrated stainless steel gullet
shear angle 35°
Resharpener area 1.5 mm

Advantages

additional noise reduction by up to -3 dB (A) thanks to the airFace design
reduced power consumption thanks to low-weight design with aluminum body
easy on spindle bearing thanks to less unbalance
exchangeable DP cutting edges incl. wear-resistant exchangeable gullet
excellent cutting quality thanks to large shear angle
corrosion protection of the entire tool by stainless steel segments

Notes

Attention! When replacing the segments, please observe the operating instructions
DP cutting edges packing unit 4 pieces
Plug insert packing unit 2 pieces
sense of rotation according to DIN-EN 50144

SmartJointer airFace Ø D=70 / 35°

Ø D	B	b	Ø d	Z	nmax			Number of segments	Ident-No. [L]	Ident-No. [R]
70	43	61	25	2+2	18700	asymmetrical	EBM	8	186037	186038
[mm]	[mm]	[mm]	[mm]		[min-1]			[St.]		

Spare parts

Dimensions

Class-No.

VP

Ident-No.

DP cutting edges

Ø D=70 / 35°

17,2x8,9x14,2
[mm]

232239

4

186076

[St.]

SmartJointer airFace Ø D=80 / 35°

Ø D	B	b	Ø d	Z	nmax			Number of segments	Ident-No. [L]	Ident-No. [R]
80	64	63	25	2+2	16400	asymmetrical	Felder/Format 4	12	186040 s	186039 s
80	43	53	30	2+2	16400	symmetrical	Biesse Jade	8	186031	186031
80	64	52	30	3+3	16400	symmetrical	Biesse Roxyl	18	186032 s	186032 s
[mm]	[mm]	[mm]	[mm]		[min-1]			[St.]		

Spare parts

Dimensions

Class-No.

VP

Ident-No.

DP-Schneidlinge

Ø D=80 / 35°

17,2x8,9x14,2
[mm]

232239

4

186077

[St.]

SmartJointer airFace Ø D=85 / 35°

Ø D	B	b	Ø d	Z	nmax			Number of segments	Ident-No. [L]	Ident-No. [R]
85	48	50	30	3+3	15500	asymmetrical	Ott	15	186058	186057
85	63	50	30	3+3	15500	asymmetrical	Ott	18	186060 s	186059 s
[mm]	[mm]	[mm]	[mm]		[min-1]			[St.]		

Spare parts

Dimensions

Class-No.

VP

Ident-No.

DP-Schneidlinge

Ø D=85 / 35°

17,2x8,9x14,2
[mm]

232239

4

186078

[St.]

SmartJointer airFace Ø D=100 / 35°

Ø D	B	b	Ø d	Z	nmax			Number of segments	Ident-No. [L]	Ident-No. [R]
100	43	61	30	2+2	13000	asymmetrical	EBM	8	186034 s	186033 s
100	64	61	30	2+2	13000	asymmetrical	EBM	12	186035 s	186036 s
100	43	40,6	25	2+2	13000	asymmetrical	Brandt 1110F, 1120 FC	8	186071	186072
100	43	40,6	30	3+3	13000	asymmetrical	Brandt	12	186065	186066
100	64	40,6	30	3+3	13000	asymmetrical	Brandt, SCM	18	186073	186074
100	85	85	30	3+3	13000	asymmetrical	Brandt	24	186067 s	186068 s
100	106	85	30	3+3	13000	asymmetrical	Brandt	30	186069 s	186070 s
100	43	59	30	3+3	13000	asymmetrical	SCM	12	186063	186064
100	64	60,6	30	3+3	13000	asymmetrical	SCM	18	186062	186061
100	64	75	30	3+3	13000	symmetrical	Biesse Akron 600/800	18	186030 s	186030 s
100	64	40	30	3+3	13000	symmetrical	HOLZ-HER 1804	18	186045 s	186046 s
[mm]	[mm]	[mm]	[mm]		[min-1]			[St.]		

Spare parts**Dimensions****Class-No.****VP****Ident-No.**

DP-Schneidlinge	Ø D=100 / 35°	17,2x8,9x14,2	232239	4	185250
		[mm]		[St.]	

SmartJointer airFace Ø D=125 / 35°

Ø D	B	b	Ø d	Z	nmax			Number of segments	Ident-No. [L]	Ident-No. [R]
125	43	40	30	3+3	10500	symmetrical	Homag	12	186047	186047
125	64	40	30	3+3	10500	symmetrical	Homag	18	186048	186048
125	43,2	54	30	3+3	10500	asymmetrical	Homag	12	185971	185970
125	64,4	54	30	3+3	10500	asymmetrical	Homag	18	185973	185972
125	43,2	72	30	3+3	10500	asymmetrical	IMA 08.378	12	186051	186052
125	64,4	72	30	3+3	10500	asymmetrical	IMA 08.378	18	186049	186050
[mm]	[mm]	[mm]	[mm]		[min-1]			[St.]		

Spare parts**Dimensions****Class-No.****VP****Ident-No.**

DP cutting edges	Ø D=125 / 35°	17,2x8,9x14,2	232239	4	185974
		[mm]		[St.]	

SmartJointer airFace Ø D=125 / 43°

Ø D	B	b	Ø d	Z	nmax			Number of segments	Ident-No. [L]	Ident-No. [R]
125	45	57	30	3+3	10500	asymmetrical	IMA 08.379	15	186053 s	186054 s
125	63	57	30	3+3	10500	asymmetrical	IMA 08.379	21	186055	186056
[mm]	[mm]	[mm]	[mm]		[min-1]			[St.]		

Spare parts**Dimensions****Class-No.****VP****Ident-No.**

DP cutting edges	Ø D=125 / 43°	17,2x8,9x14,2	232239	4	186075
		[mm]		[St.]	

Spare parts / accessories**Dimensions****Class-No.****VP****Ident-No.**

Countersunk screws	M5x13,5 T20	995125	10	185080
Plug insert Torx	T20	985730	2	185293
Torque screwdriver without insert	5,0 Nm	985730	1	185292
	[mm]			

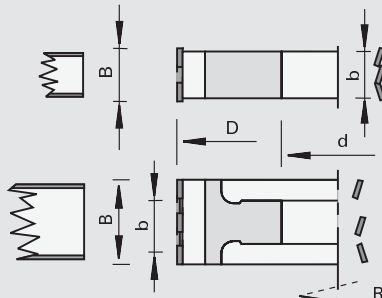
222120

DIAREX airFace jointing cutter DP

Product



Drawing

LEUCO
airFace

Polycrystalline diamond [DP]

MEC

Machine / application

- Through-feed machines
- Edge banding machines
- for very quiet and chip-free jointing of solid wood and wood-based panels with and without coating, focusing particularly on noise reduction and quality standards

Design

- steel body with airFace surface
- integrated balance screws
- reinforced DP cutting edges
- reduced gullet volume
- shear angle 48°
- Resharpener area 3 mm

Advantages

- compared to the LowNoise version, additional noise reduction by -2 dB(A) through airFace design and reduced gullet volume
- Increased edge life performance compared to standard jointing cutters
- optimum cutting quality thanks to a very large shear angle
- for zero joint technology

Notes

- Z=4+4 tools for machine feed from 22 m/min!
- sense of rotation according to DIN-EN 50144
- suitable for demanding abrasive panel materials
- machining of 8-mm panels is possible without adjustment

Ø D	B	b	Ø d	Z	DKN	nmax			Ident-No. [L]	Ident-No. [R]
70	48,1	41	30	3+3	8x3,3	24000	HOLZ-HER 1801 / 1802	asymmetrical	186316 s	186317 s
70	64	41	30	3+3	8x3,3	24000	HOLZ-HER 1801 / 1802	asymmetrical	186318 s	186319 s
80	42,8	53	30	2+2	8x3,3	23300	Biesse Jade / Akron	symmetrical	186309 s	186309 s
85	48,1	50	30	3+3	8x3,3	22000	Ott	asymmetrical	186356 s	186357 s
85	64	50	30	3+3	8x3,3	22000	Ott	asymmetrical	186358 s	186359 s
100	64	75	30	3+3	8x3,3	18000	Biesse Akron 600 / 800	symmetrical	186308 s	186308 s
100	42,8	40,6	30	3+3	8x3,3	18000	Brandt	asymmetrical	186312	186313
100	64	40,6	30	3+3	8x3,3	18000	Brandt	asymmetrical	186310 s	186311 s
100	42,8	61	30	2+2	8x3,3	18000	EBM, Hebrock	asymmetrical	186315 s	186314 s
100	64	40	30	3+3	8x3,3	18000	HOLZ-HER 1804	symmetrical	186320	186321
100	42,8	59	30	3+3	8x3,3	18000	SCM	asymmetrical	186362	186363
100	64	60,6	30	3+3	8x3,3	18000	SCM	asymmetrical	186360 s	186361 s
125	42,8	54	30	3+3	8x3,3	15000	Homag	asymmetrical	186332	186333
125	42,8	54	30	4+4	8x3,3	15000	Homag	asymmetrical	186336 s	186337 s
125	64	54	30	3+3	8x3,3	15000	Homag	asymmetrical	186328	186329
125	64	54	30	4+4	8x3,3	15000	Homag	asymmetrical	186340 s	186341 s
125	32,2	36,8	30	3+3	8x3,3	15000	Homag	symmetrical	186322	186322
125	32,2	36,8	30	4+4	8x3,3	15000	Homag	symmetrical	186325	186325
125	42,8	40	30	3+3	8x3,3	15000	Homag	symmetrical	186323	186323
125	42,8	40	30	4+4	8x3,3	15000	Homag	symmetrical	186326	186326
125	64	40	30	3+3	8x3,3	15000	Homag	symmetrical	186324	186324
125	64	40	30	4+4	8x3,3	15000	Homag	symmetrical	186327 s	186327 s
125	42,8	72	30	3+3	8x3,3	15000	IMA 08.378	asymmetrical	186334	186335
125	64	72	30	3+3	8x3,3	15000	IMA 08.378	asymmetrical	186330	186331
125	42,8	72	30	4+4	8x3,3	15000	IMA 08.378	asymmetrical	186338 s	186339 s
125	64	72	30	4+4	8x3,3	15000	IMA 08.378	asymmetrical	186342 s	186343 s
125	42,8	57	30	3+3	8x3,3	15000	IMA 08.379	asymmetrical	186350 s	186351 s
125	64	57	30	3+3	8x3,3	15000	IMA 08.379	asymmetrical	186348 s	186349 s
[mm]	[mm]	[mm]	[mm]		[mm]	[min-1]				

mounted on hydro bushing ID no. 184310

Ø D	B	Ø d	Z	nmax			Ident-No. [L]	Ident-No. [R]
125	42,8	70/30	4+4	15000	IMA 08.379 - Hydro	asymmetrical	186352 s	186353 s
125	64	70/30	4+4	15000	IMA 08.379 - Hydro	asymmetrical	186354 s	186355 s
150	42,8	70/30	4+4	12000	IMA 08.378 - Hydro	asymmetrical	186344	186345
150	64	70/30	4+4	12000	IMA 08.378 - Hydro	asymmetrical	186346 s	186347 s
[mm]	[mm]	[mm]		[min-1]				

→ A CLASSIC GETS A NEW FACE

„POWERTEC“ HOGGER BECOMES „POWERTEC AIRFACE“

Increasing the edge life while reducing the noise is, as in the previous years, the aim to be achieved for sizing cuts! Therefore the previous PowerTec III has been redesigned and is now called PowerTec airFace! The principle of a pre-hogging cutting edge and a finish-cut tooth on one wing remains unchanged and allows feeds of up to 100m/min. Even in the future, a uniform cutting width over the entire tool life can be guaranteed!

Optimum noise reduction

The noise during the cutting process is generated by air turbulences around the tool and the vibrations which are caused by the contact of the hogs with the panel. The projecting edges of the PowerTec III have been consequently rounded and, in addition, the tooth pitch has been varied. The new LEUCO airFace design which is also used for jointing cutters canalizes the air on the tool sides during rotation to reduce air turbulences. This ensures a smoother and quieter running of the complete system "tool during processing" both during processing and when idling.

For a very long edge life

Hoggers are used in modern and industrial furniture production. The automated through-feed machines record the running meters of a tool whether used for serial production or for the production of individual parts and can therefore make transparent the efficiency of the tools that are used. By using the new cutting edge profile of the new PowerTec airFace, LEUCO customers will achieve an increased edge life of up to 15 % compared to the previous version.

This cutter is recommended by LEUCO when perfect cutting quality and long tool life is required, for instance for use with hard and sensitive high-gloss materials. The cutter can be used starting with a workpiece thickness of 8 mm.

LEUCO
powertec
airface

For a long time now, the LEUCO PowerTec III hogger has been one of the most in-demand hogs on the market in the industrial furniture production! The new airFace version will become a part of this squad and replace the previous version PowerTec III!



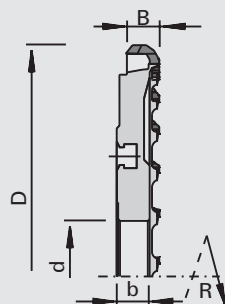
215032

PowerTec airFace Hogger DP for LEUCO s-System Ø 160 mm and Ø 192 mm (DZ)

Product



Drawing

LEUCO
toplineLEUCO
powerTec
EDGE

Polycrystalline diamond [DP]

MEC

Machine / Application

| double end tenoners
 | for chip-free sizing of raw, melamine-, paper-, HPL-laminated, foiled and veneered panels with focus on edge lives and profitableness

Design

| resharpening area 4 mm
 | $n_{max} = 7,200 \text{ min}^{-1}$
 | LEUCO airFace: vibration reduced and aerodynamically
 | polished quality cutting edge for optimum cutting quality
 | division of cut into low-noise hogger tooth and finish-cut tooth for optimum quality with closed cutting edges on one wing

Advantages

| very long edge lives thanks to optimized tooth form
 | Noise reduction in idle and machining by airFace Design
 | Cutting width consistency over entire tool life cycle
 | high feed rates can be realized
 | low total cost / running meter ratio
 | Machining of panel thicknesses from 8 mm on possible
 | good chip evacuation
 | compatible for a wide variety of clamping systems

Notes

| for double hogging process (DZ)
 | application with feed
 | sense of rotation according to DIN-EN 50144

Ø D	B	b	Ø d	Z	Feed_DZ		Ident-No. [L]	Ident-No. [R]
250	9,5	23	60	16+8	28	s-System Ø 160	186526	186525
250	9,5	23	60	20+10	45	s-System Ø 160	186528	186527
250	9,5	23	60	28+14	60	s-System Ø 160	186530	186529
250	9,5	23	60	36+18	80	s-System Ø 160	186532 s	186531 s
250	14,5	23	60	16+8+4	28	s-System Ø 160	186540 s	186539 s
250	14,5	23	60	20+10+5	45	s-System Ø 160	186534 s	186533 s
250	14,5	23	60	28+14+7	60	s-System Ø 160	186536 s	186535 s
250	14,5	23	60	36+18+9	80	s-System Ø 160	186538 s	186537 s
250	9,5	23	80	16+8	28	s-System Ø 192	186542	186541
250	9,5	23	80	20+10	45	s-System Ø 192	186544 s	186543 s
250	14,5	23	80	16+8+4	28	s-System Ø 192	186546 s	186545 s
250	14,5	23	80	20+10+5	45	s-System Ø 192	186548 s	186547 s
[mm]	[mm]	[mm]	[mm]		[m/min]			

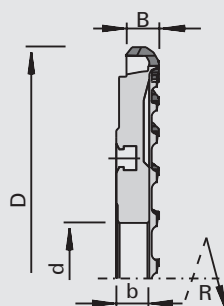
215332

PowerTec airFace S Hogger DP for LEUCO s-System Ø 160 mm and Ø 192 mm (DZ)

Product



Drawing

LEUCO
toplineLEUCO
powerTec
airFace S

Polycrystalline diamond [DP]

MEC

Machine / Application

- double end tenoners
- for chip-free sizing of raw, melamine-, paper-, HPL-laminated, foiled and veneered panels with focus on edge lives and profitableness

Design

- resharpening area 4 mm
- $n_{max} = 7,200 \text{ min}^{-1}$
- LEUCO airFace: vibration reduced and aerodynamically
- polished quality cutting edge for optimum cutting quality
- division of cut into low-noise hogger tooth and finish-cut tooth for optimum quality with closed cutting edges on one wing

Advantages

- Extremely long edge lives thanks to optimized tooth form and reinforced DP cutting edges
- Noise reduction in idle and machining by airFace Design
- Cutting width consistency over entire tool life cycle
- high feed rates can be realized
- low total cost / running meter ratio
- Machining of panel thicknesses from 8 mm on possible
- good chip evacuation
- compatible for a wide variety of clamping systems

Notes

- for double hogging process (DZ)
- application with feed
- sense of rotation according to DIN-EN 50144

Ø D	B	b	Ø d	Z	Feed_DZ		Ident-No. [L]	Ident-No. [R]
250	9,5	23	60	16+16	28	s-System Ø 160	186550 s	186549 s
250	9,5	23	60	20+20	45	s-System Ø 160	186552	186551
250	9,5	23	60	28+28	60	s-System Ø 160	186554	186553
250	9,5	23	60	36+36	80	s-System Ø 160	186556	186555
250	14,5	23	60	16+16+4	28	s-System Ø 160	186558 s	186557 s
250	14,5	23	60	20+20+5	45	s-System Ø 160	186560 s	186559 s
250	14,5	23	60	28+28+7	60	s-System Ø 160	186562 s	186561 s
250	14,5	23	60	36+36+9	80	s-System Ø 160	186564 s	186563 s
250	9,5	23	80	16+16	28	s-System Ø 192	186566 s	186565 s
250	9,5	23	80	20+20	45	s-System Ø 192	186568	186567
250	14,5	23	80	20+20+5	45	s-System Ø 192	186570 s	186569 s
[mm]	[mm]	[mm]	[mm]		[m/min]			

TOOLS ARE EASY TO FIND IN THE ONLINE CATALOG

CHOOSE TOOLS BASED ON MATERIAL, MACHINE, FEATURES OR APPLICATION

From the entire LEUCO tool line, with about 8,500 items, customers can target the right tools to choose. The filters "Material", "Machine", "Feature" and "Product name" narrow down the choice of possible tools further and further.

Example: The user has a certain material and wants a tool for processing it, so he clicks on the Material filter for that material.

He is shown a number of LEUCO tools and tool types that are suitable for processing the material.

If the user gets too many hits, he can easily narrow down the selection, such as by specifying the tool type more precisely by selecting "circular saw" and the diameter he wants.

The online catalog is extremely flexible. Another of many search options can be chosen, such as first the machine that the tool is needed for, then closer specification of the tool's features, and finally the material to be processed, for example.

Comparison option and price queries

The "Compare" function shows the features or relevant tools side by side. Promising tools are placed in the "Get price" basket. After the address is provided, there is always the option to ask for tool prices.



LEUCO ONLINE CATALOG

FIND TOOLS EASY!

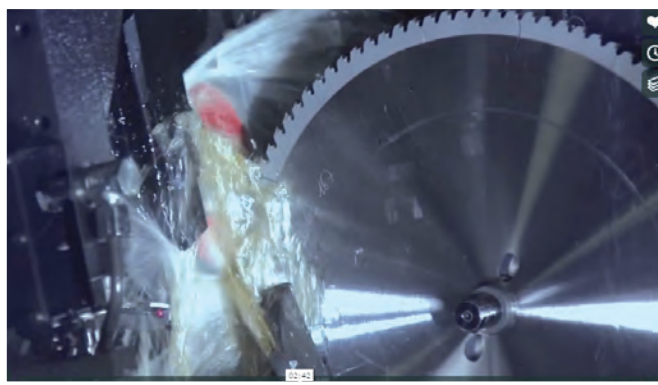
- | **Where:** www.leuco.com/products
- | **What:** Filter tools from the comprehensive, up-to-date LEUCOline precisely, quickly and easily
- | **When:** 365 days a year, round the clock for everyone
- | **How:** Intuitive to use, without a password, login, etc.

Languages: German, English, Russian, Chinese, French

→ See for yourself how easy it is at www.leuco.com/products

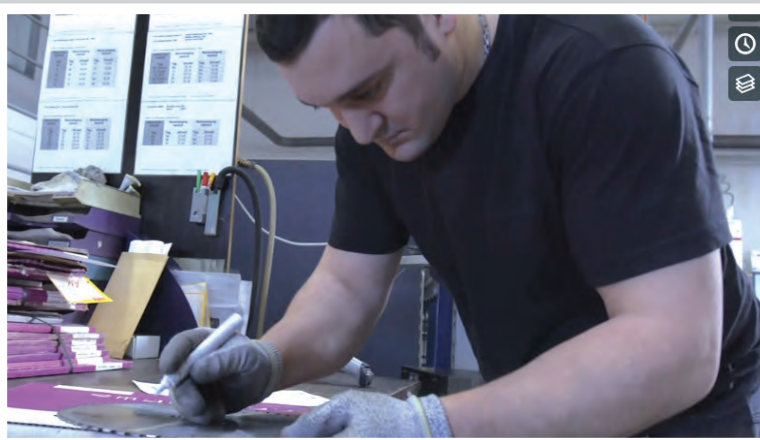
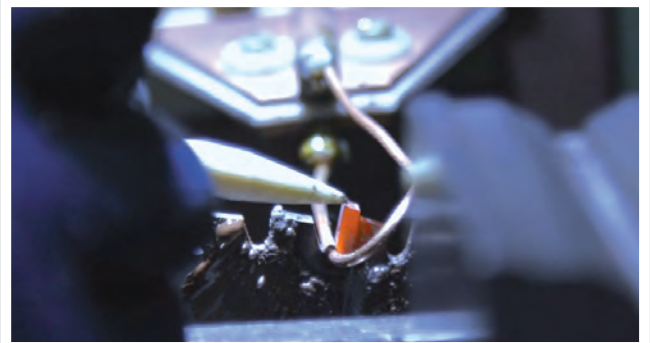


→ ORIGINAL MANUFACTURER-QUALITY SHARPENING SERVICE



Take a look at the new LEUCO sharpening service video to see how a dull tool moves through the various process steps in the LEUCO service center to become a freshly sharpened precision tool in OEM quality. **To watch go to the LEUCO YouTube channel under:**

>>> WWW.YOUTUBE.COM/LEUCOTOOLING <<<





LEUCO



CONTACT

Ledermann GmbH & Co. KG
Willi-Ledermann-Straße 1
72160 Horb am Neckar / Germany

T +49 (0)74 51/93 0
F +49 (0)74 51/93 270

info@leuco.com
www.leuco.com